

# OrbiPlate™

## Jaques Apartments Richmond Victoria



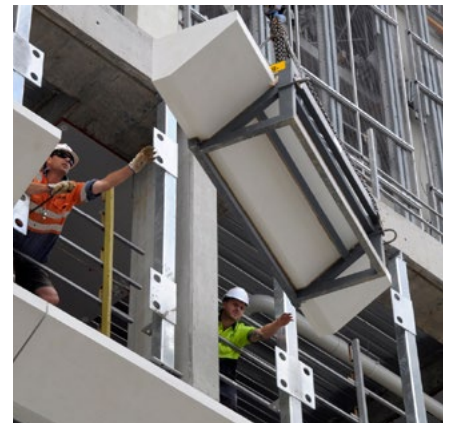
### The Project

The Jaques apartment project in Coppin st Richmond features exterior facades surrounding the car parking on the lower levels. GRC Environments were responsible for the manufacture and erection of the light weight hollow composite panels.

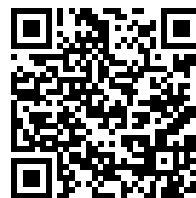
OrbiPlate™ was used to fix each of the panels to the outside of the galvanised steel structural members that will later have crash barriers fitted internally. OrbiPlate™ provided sufficient connection tolerance to enable the facade panels to be quickly bolted into place, dramatically reducing crane time while providing a high strength structural connection.

### OrbiPlate™

The patented OrbiPlate™ system delivers connection tolerances of 20mm in any direction to position the main structural M20 bolt. It is comprised of an 80mm main circular washer with an elongated slot surrounded by serrated teeth that provide the effective mechanical lock with a secondary, smaller washer used to position the main structural M20 bolt as required.



For more information,



Watch this video



OrbiPlate™ Web page

For further information, please contact Ramset™

AU - PHONE: 1300 780 063 [www.ramset.com.au](http://www.ramset.com.au)

NZ - PHONE: 1800 RAMSET (726738) [www.ramset.co.nz](http://www.ramset.co.nz)